

Stakeholder Liaison Forum

12 March 2026

- The webinar will commence shortly.
- Chat is disabled for this session.
- You may ask a question in the **Q&A channel**, but it will not be visible to the audience.
- We will read out and answer some of the most common questions in the time after the presentations.
- We cannot answer technical questions that relate to your specific circumstances in today's session. Please email these questions to support@paymenttimes.gov.au instead.
- This session will NOT be recorded. The slides will be published on the Regulator's website at paymenttimes.gov.au.

Agenda

- Welcome
- Regulator's opening remarks
- Compliance and enforcement update
- Data integrity and tips
- Slow payers
- Fast payers
- New portal
- Questions from participants
- Regulator's closing remarks

Ask us a question

- Use the Q&A channel to add your questions during the sessions.
- We will answer questions after the presentations.

Our focus:

- Questions relevant to today's content, prioritised by common themes.



Have your say, your feedback matters!

Post-webinar survey: Scan the QR code at the end of the session and tell us about your experience.

Why participate? Your feedback helps us tailor and improve our events.



Australian Government
Payment Times Reporting Regulator



Payment Times
Reporting Scheme

Regulator's opening remarks

Robyn Beutel

Payment Times Reporting Regulator



Australian Government
Payment Times Reporting Regulator



Payment Times
Reporting Scheme

Compliance & Enforcement Update

Roman Maevsky

Director, Compliance & Enforcement Team

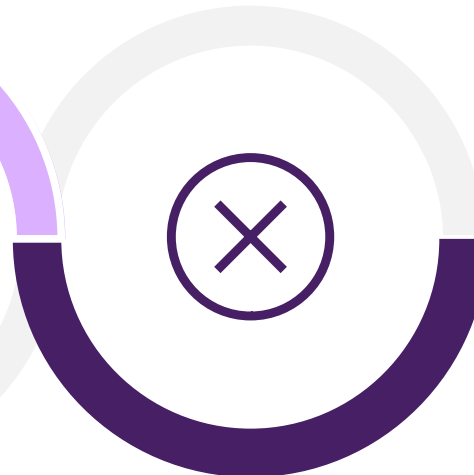


Compliance Priorities

Failure to report on time



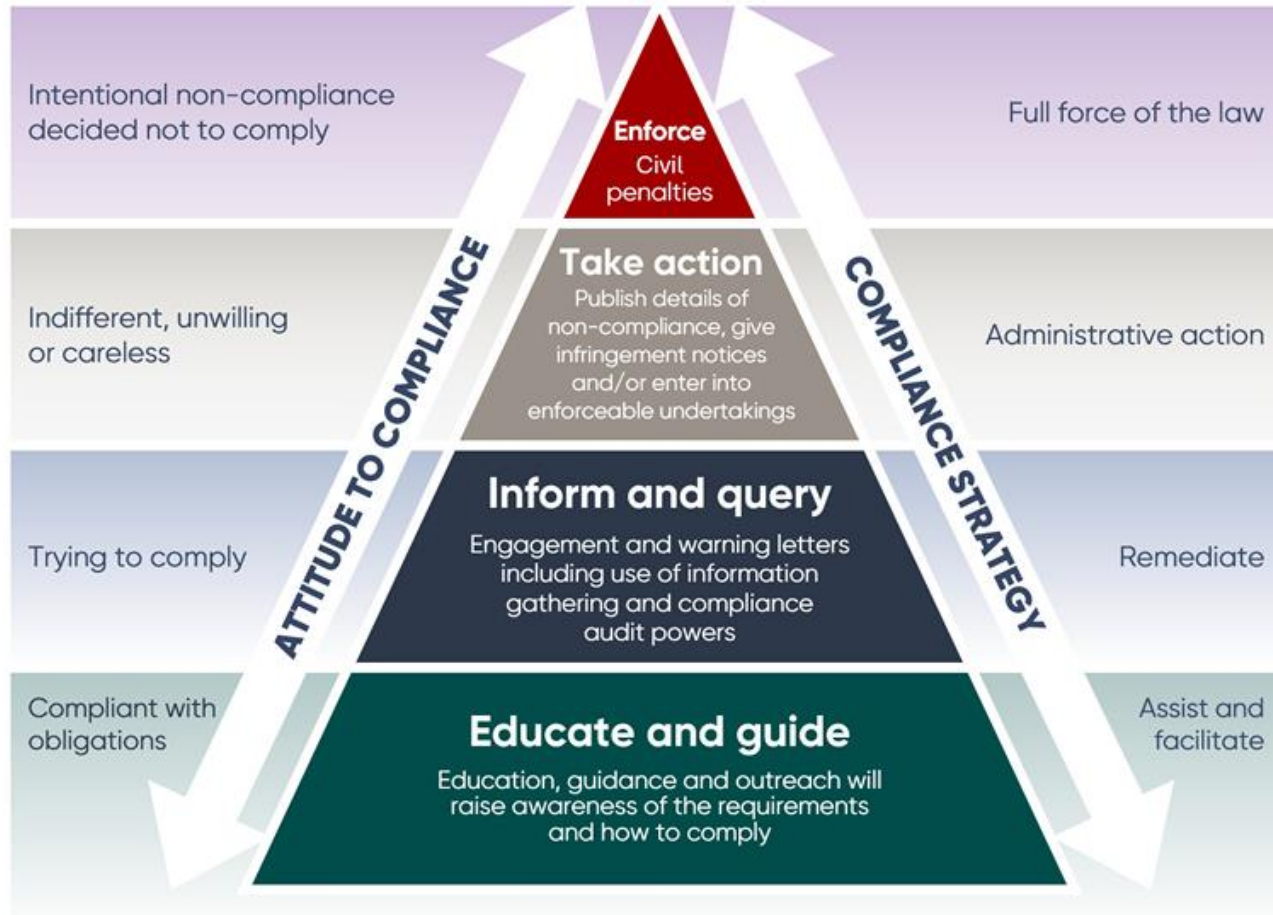
False or misleading reports and/or conduct



Failure to comply with directives from the Regulator and/or Minister

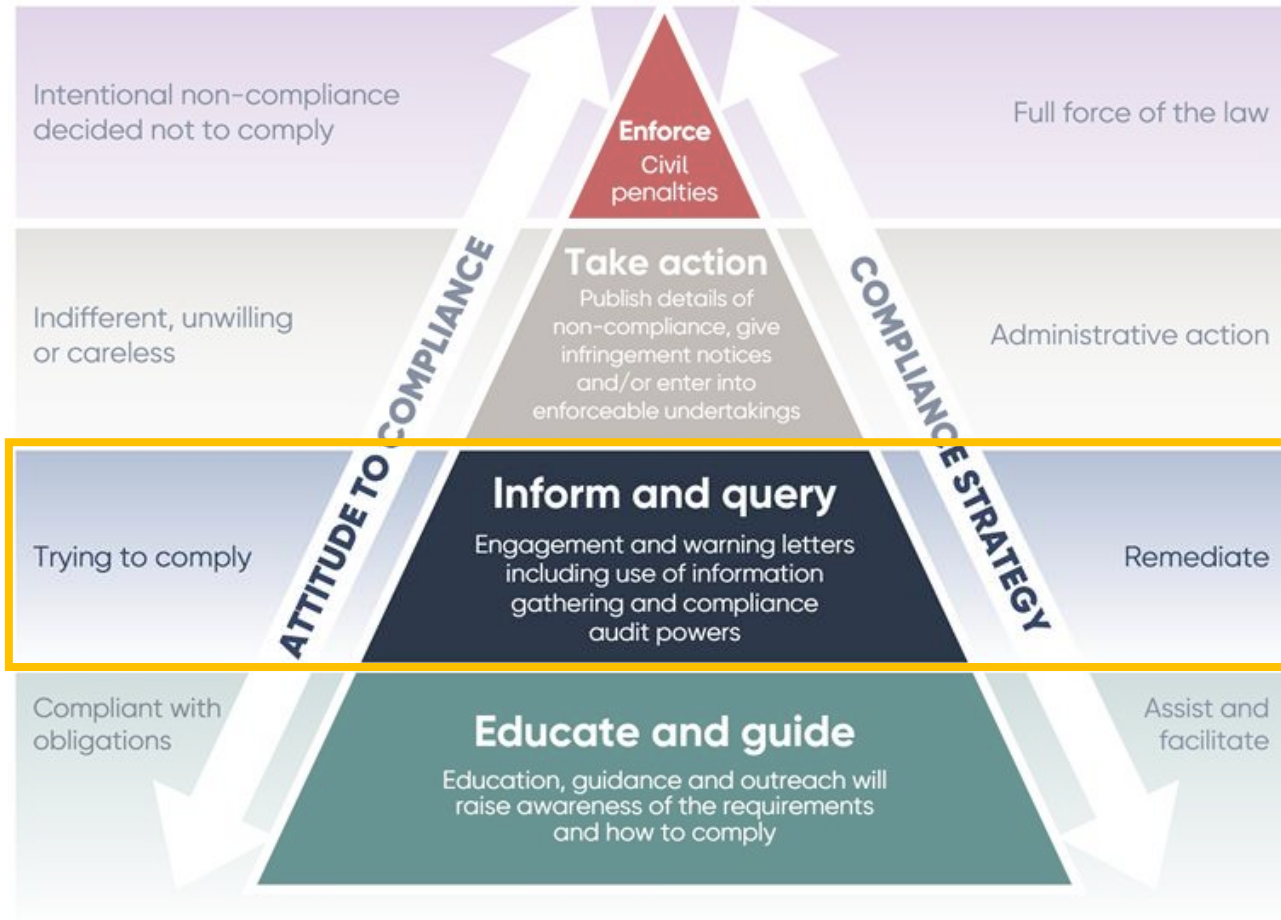


Escalating approach





Escalating approach



Inform and Query

In the six months to 31 December 2025 we saw...

Entities contacted regarding their compliance



As a result of us reaching out ...



293 Entities
reported for the
first time



552 Additional
reports submitted



200 Reports with
incorrect information
revised

Small Business Identification (SBI) Tool



Mandatory for reporting

- Official and only tool: no other sources can be used
- Must be used when preparing a report
- Non-use may result in false or misleading reporting



Operational Use

- Searches may be run by group member entities or advisors
- Reporting entity remains responsible
- Relevant details should be included in report comments

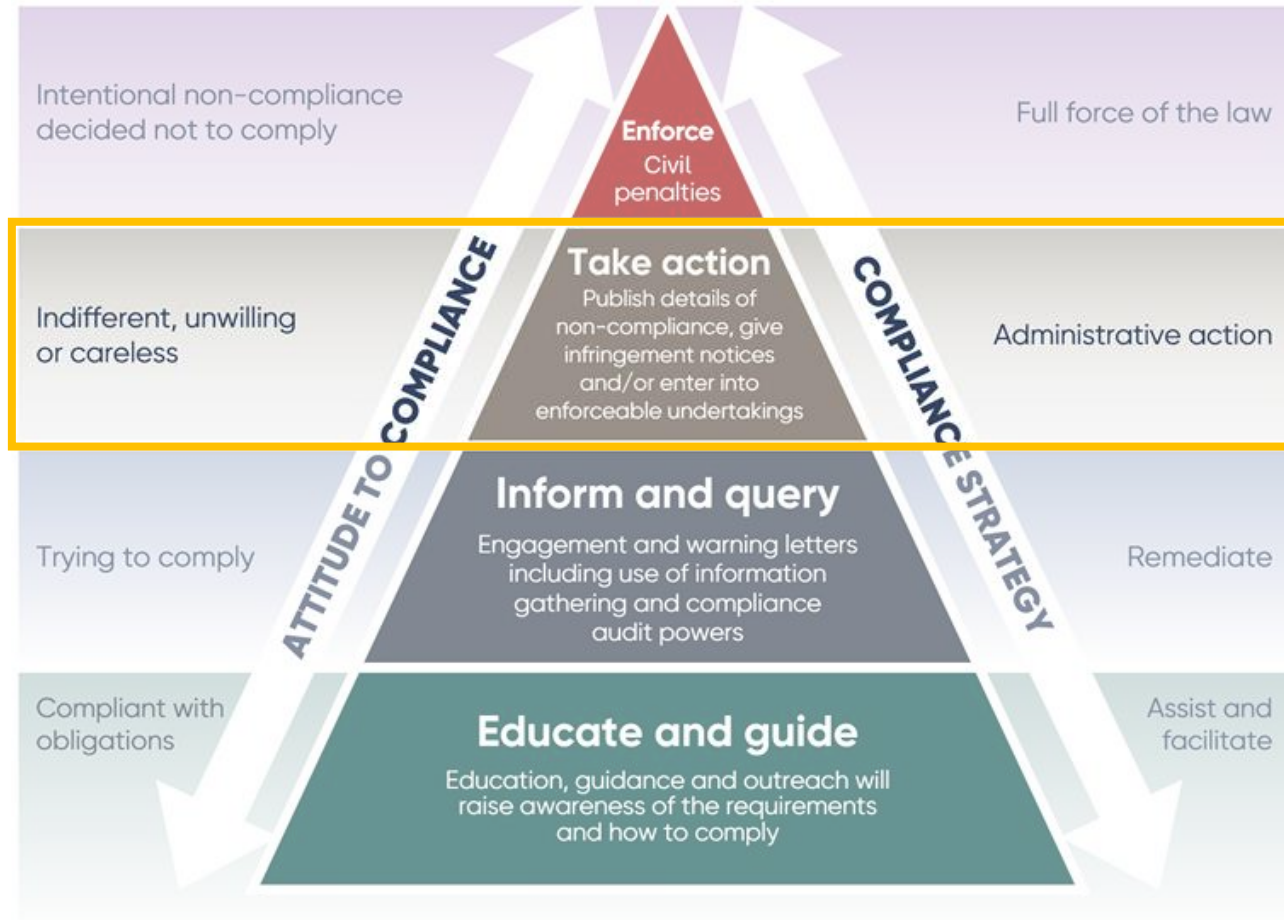


Updates and corrections

- Updated in February 2026. Options for searches now include 2026 calendar year
- ABN limit for searches will shortly be increased
- Classifications can be changed if sufficient evidence provided
- Refer to:
Information Sheet 6 – SBI Tool
(updated in December 2025 for more clarity)



Escalating approach



Take action

In the six months to 31 December 2025 we saw...



7 Entities
published



34 instances of non-
compliance published



Infringement notices
given



Australian Government
Payment Times Reporting Regulator



Payment Times
Reporting Scheme


Data Integrity


Talitha O'Connor


Assistant Director, Compliance & Enforcement Team

Importance of Data Integrity

COMPLIANCE PRIORITIES: HARMS

 Integrity of the scheme is compromised

 Unfair business advantage

 Decision-making based on inaccurate data

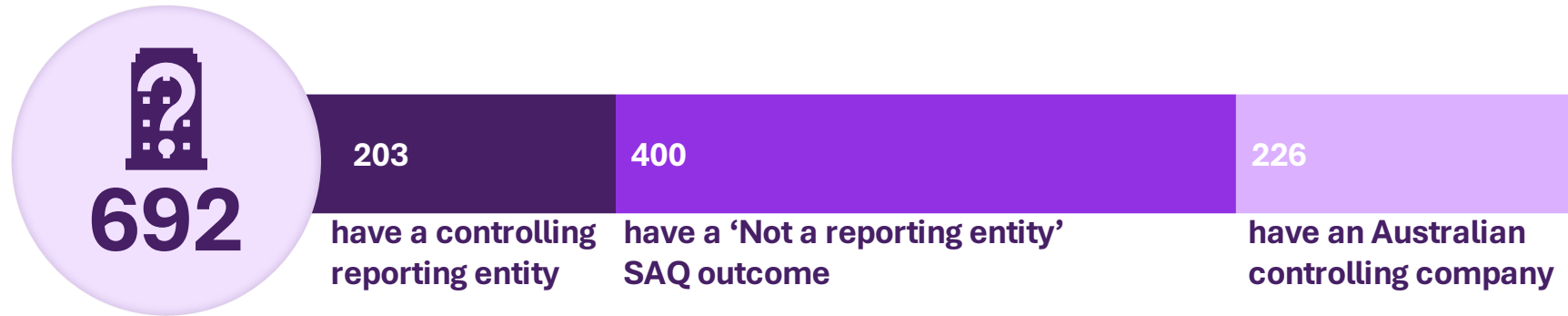


Improve the quality of Reporting



Impact on slow payer status & directions

Reports Assurance



Non-reporting entities with submitted reports



Entities contacted

Common Issues

Reporting Entity Eligibility

- Entities that do not meet the reporting entity criteria submitting reports
- Entities not including payment times data for all entities in a group



6.3%

Entity Information Forms

- Ultimate Controlling Entity Details
- Financial Year End Day and Month
- Subsidiary Reporting Entity Details
- First Reporting Period Start Date



7.8%

Report Types

- Answering YES to Use of a financial standard in EIF, then submitting a standard report
- Answering NO to Use of a financial standard in EIF, then submitting a modified (uses AASB 8) report



28.2%

SBI Tool Use

- Entities not selecting the correct year when running the SBI tool
- Entities failing to use the SBI tool in a timely manner, or at all



12.5%

Payment Terms Inconsistencies

- Entering a range of payment terms where the minimum is more than the maximum
- Giving a most common payment term that falls outside of the range of payment terms



7.9%

Payment Times Discrepancies

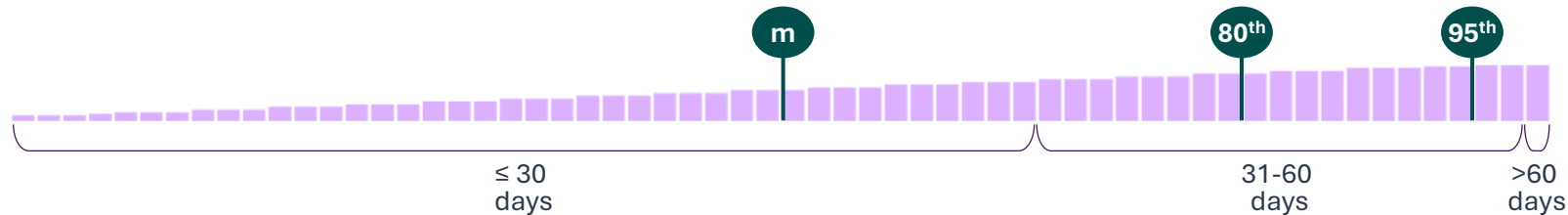


14.4%

Common Issues

Payment Times

Field Name	Entity A	Entity B	Entity C	Entity D
Invoices paid within 30 days (%)	45.00	15.77	79.25	66.67
Invoices paid in 31-60 days (%)	53.00	75.92	15.88	31.67
Invoices paid over 60 days (%)	1.00	9.23	4.87	1.67
	✗ 99.00	✗ 100.92	✓ 100.00	✓ 100.01
Median payment time			27	26
80 th percentile payment time			32	59
95 th percentile payment time			✗ 7655	✗ 92



Reporting Tips and tricks



Confirm Entity Information

Complete entity details and Entity Information Form on the new portal



Get consolidated reporting right

Only the highest-level reporting entity in the group should submit a report



Use the SBI Tool

Use the SBI tool with the correct year every time you prepare a report



Start your preparations early

Don't wait until the last day to report and risk hitting portal validations



Australian Government
Payment Times Reporting Regulator



Payment Times
Reporting Scheme

Slow Small Business Payers

Eugene Kourbatski

Assistant Director, Compliance & Enforcement Team



Slow Small Business Payer Framework



Identifies slow payment behaviour



Encourages proactive improvement



Enables public transparency where behaviour persists

Complements the Fast Small Business Payer Initiative



Fast Payer: recognises strong performance



Slow Payer: Addresses sustained poor performance

Two sides of the same reform, promoting cultural change in payment practices

What is a Slow Small Business Payer?

- Identification is based on payment performance relative to other reporting entities within a reporting cycle.

> 30 days

95th percentile payment time

AND

Slowest 20%

Overall or ANZSIC Division



**Slow Small Business Payer
for Reporting Cycle**

Reporting Cycles?

1 January - 30 June | 1 July - 31 December

Reports assigned based on Reporting Period **end date**

Slow Small Business Payer Direction



When is a Direction enlivened?

- Slow payer for **two consecutive reporting cycles**
- Slow payer in **one cycle and failed to report in an adjacent cycle**

*Meeting criteria makes an entity **eligible** for a Direction – not automatically imposed on entity*



Discretion and Procedural Fairness

- Direction power is **discretionary**
- **Procedural fairness applies** (proposed decision, written submissions)
- Regard given to
 - Compliance history
 - Improvements made
 - Circumstances affecting performance

Slow Payer Direction - Effects



Public Transparency

- **Disclosure** requirements regarding slow payer status
- Website and procurement documents
- **Published** on Payment Times Register indefinitely



Direction Duration

- Up to **12 months**
- Ceases if 95th percentile payment time \leq **30 days**



Consequences of Non-Compliance

- Liable to **civil penalty**

October 2025 Slow Payer Engagement



Entities identified as slow payers in
1 January – 30 June 2025 reporting cycle



Purpose of engagement

- **Awareness:** Raise visibility of performance
- **Improvement:** Encourage proactive review of payment practices
- **Clarification:** Clarify consequences of inaction (i.e. subject to direction)



Key themes from discussions

- Understanding the 95th percentile payment time measure
- Payment Terms vs Payment Times metrics in slow payer classification
- More time to show improvement

What should you do?



Monitor payment performance

Monitor your 95th Percentile payment time (not average time or % paid within terms)



Focus on continuous improvement

Seek opportunities to improve payment processes and minimise delays in payments to small business suppliers



Use available tools and be proactive

Utilise the SBI tool to identify small businesses suppliers and proactively manage their payment times and practices



Australian Government
Payment Times Reporting Regulator



Payment Times
Reporting Scheme

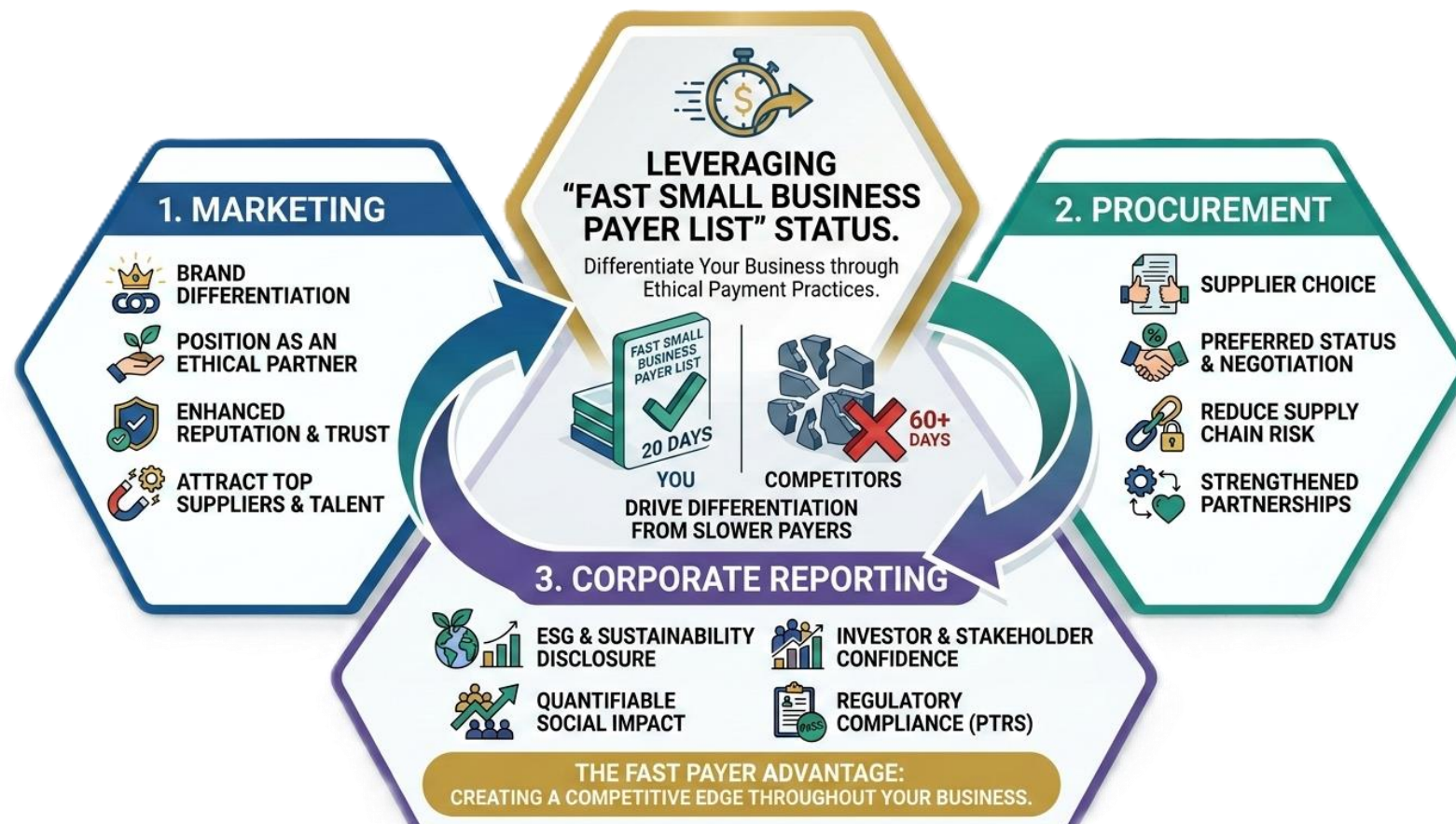
Fast Small Business Payers

Ben Kennedy

Director, Research and Outreach Team



What is the Fast Small Business Payer List?

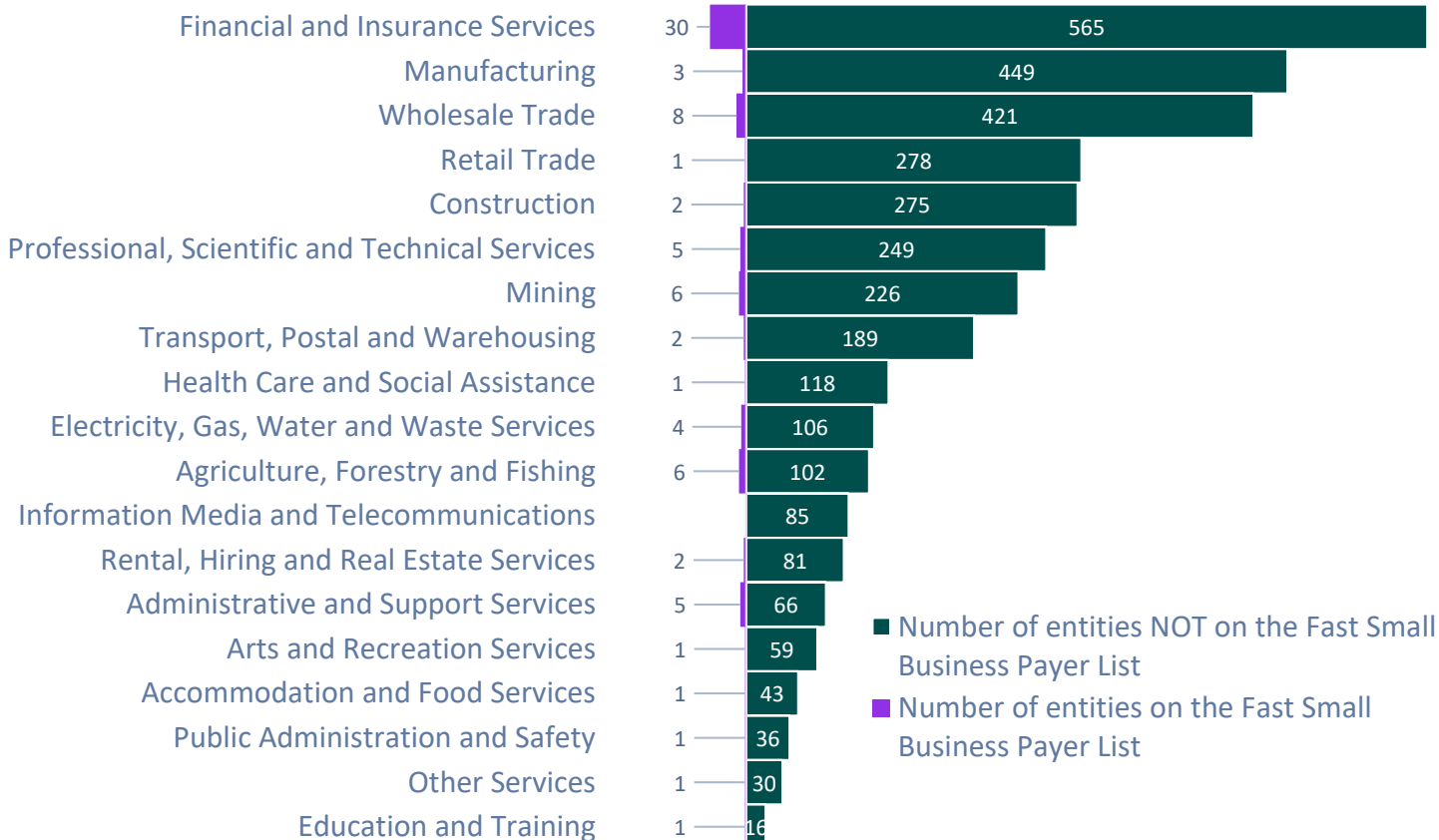




Eligibility Requirements

Reporting Status	Consecutive Reports	Payment Speed	Recent Reporting
			
Be a Reporting Entity or Reporting Nominee under the <i>Payment Times Reporting Act 2020</i> .	Submit Two Consecutive Payment Times Reports with No Gaps Between Periods.	95th Percentile Payment Time of 20 Days or Less in Both Reports.	Most Recent Report End Date Less Than 9 Months Old.

Change required to become a fast payer



Across all industries
only 2.3% qualified
as a fast small business payer.



Information media & Telecommunications
industry

80 % of entities
95th percentile
↓ 56 days

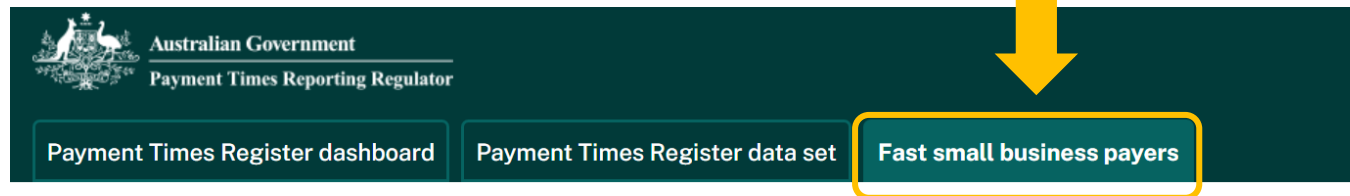


Financial & Insurance Services
industry

80 % of entities
95th percentile
↓ 38 days

How to access the List

<https://register.paymenttimes.gov.au/fast.html>



How to access the List Fast small business payers



A screenshot of the 'Fast Small Business Payer List' page. The left sidebar contains a navigation menu with 'Home' at the top and 'Fast Small Business Payer List' highlighted with a yellow box and a yellow arrow pointing to it. Below the sidebar is a search bar with the text 'Search a business (search by business name, ABN, ACN/ARBN)' and a dropdown menu set to 'All'. The main content area is titled 'Fast Small Business Payers, all industries' and contains a table with the following data:

Business Name	ABN	ACN/ARBN	Second Qualifying Report 95th Percentile (days)	Second Qualifying Report Small Business Procurement	Added in last 14 days
ADM TRADING AUSTRALIA PTY LTD	92126806979	126806979	0	44.00%	
AIOI NISSAY DOWA INSURANCE COMPANY AUSTRALIA PTY LTD	11132524282	132524282	4	53.30%	
ALLIED CREDIT PTY LTD	65143964667	143964667	14	19.00%	
AMENTUM AUSTRALIA PROPRIETARY LIMITED	12079749287	079749287	14	39.00%	
ARIA INVESTMENTS TRUST	51484956137		13	1.64%	
AUSTRALIAN DAIRY FARMERS CORPORATION LTD.	80456117281	610590200	12	100.00%	



Australian Government
Payment Times Reporting Regulator



Payment Times
Reporting Scheme

The new reporting portal

Leanne Kennedy

Director, Systems and Digital Services Team



The new reporting portal is live

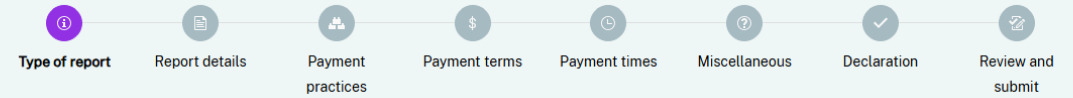
The new portal delivers:

- a simpler, more intuitive layout with clearer navigation
- familiar core functions
- advanced features to support accurate and consistent reporting
- improved performance for a more efficient, secure and user-friendly experience.

Intuitive navigation

- Progress guides show the steps in completing each form
- Quickly jump back to earlier steps
- Portal saves your report information in draft

Submit a report



Warning

A reporting entity is the highest-level entity within a corporate group that meets all of the criteria to be a reporting entity under the *Payment Times Reporting Act 2020* (the Act). If an entity is controlled by another entity that meets the reporting entity criteria, it cannot be a reporting entity.

Your entity should only submit a report if your entity meets the criteria to be a reporting entity under the Act, including that it is not controlled by a reporting entity, or your entity has been determined to be a subsidiary reporting entity by the Regulator.

Read this important information before you continue

In this section, you can select the type of report you want to submit. You can only submit an **original** payment times report through this page if the reporting period commenced on 1 July 2024 or later.

To submit a report for a reporting period that began prior to 1 July 2024, visit the [Submit a report-pre July 2024](#) page.

To submit a revised report, go to the [View or revise a report](#) page.

For guidance on completing a report, including preparing datasets and calculating required data fields, refer to our [Guidance](#).

This report will be saved as a draft after you have completed the 'Report details' step. Once in draft, you can exit at any step and then return to finalise submission.

The draft report will be retained for three months from the date it was last modified.

Please select the type of report you need to submit *

Standard report ▼


I confirm the information in the Entity Information form is still true and correct.*


You have confirmed the information given to the Regulator in the *Entity Information* form is still true and correct.

Continue


Revising reports is now faster and easier

- Original report content appears
- No need fill out the report fields again
- Minimises chances of mistakes and inaccurate reports

 Australian Government
Payment Times Reporting Regulator

 Payment Times
Reporting Scheme

Ken.Behrens@treasury.com
Department of the Treasury
ABN: 92 602 414 793



[Home](#) > [Submit and view payment times reports](#) > [Revise a report](#)

Payment times

Type of report Report details Payment practices Payment terms **Payment times** Miscellaneous Declaration Review and submit

Average payment time *

Median payment time *

80th percentile payment time *

95th percentile payment time *

Percentage of small business trade credit arrangements paid within payment terms *


Invoices paid within 30 days (%) *


Invoices paid in 31-60 days (%) *

Invoices paid over 60 days (%) *


New 'review and confirm' approach

- Less reliance on data entry by users
- Forms pre-fill with ABR data and previous reported information
- Drop down headings for each step = faster checking

 Australian Government
Payment Times Reporting Regulator

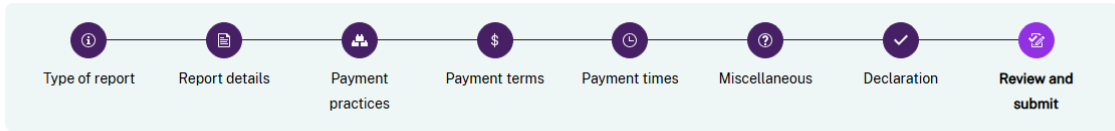
 Payment Times
Reporting Scheme

Ken Behrens@treasury.com
Department of the Treasury
ABN: 92 802 414 783



[Home](#) > [Submit and view payment times reports](#) > [Submit a report](#)

Review and submit



The *Entity Information* form was last updated on 24/01/2026.
Update [Entity Information](#) form.

Please review the information you have provided before submitting your Payment Times Report.

Type of report ^

Please select the type of report you need to submit
Standard report

I confirm the information in the Entity Information form is still true and correct.
Yes

Report details v

Payment practices v

Payment terms v

Payment times v

Miscellaneous v

Declaration v

Delete Print Validate



Australian Government
Payment Times Reporting Regulator



Question time...



Australian Government
Payment Times Reporting Regulator



Payment Times
Reporting Scheme

Closing remarks

Robyn Beutel

Payment Times Reporting Regulator



Australian Government
Payment Times Reporting Regulator



Payment Times
Reporting Scheme

Have your say!

Scan the QR code to tell us what you thought of the session

engagement@paymenttimes.gov.au

We will publish these slides on the www.paymenttimes.gov.au website soon

